



2019 AYC STANDARD DROP MARKS SAILING INSTRUCTIONS

(with Amendment 1)

Organizing Authority: Annapolis Yacht Club
Annapolis, Maryland, USA

<http://www.annapolisyc.com/racing/regattas>

These sailing instructions apply to AYC regattas only if the notice of race so states.

The notation '[DP]' in a rule in the sailing instructions (SIs) or notice of race (NoR) means that the penalty for a breach of that rule may, at the discretion of the protest committee, be less than disqualification. The notation '[NP]' in a rule of the SIs or NoR means that a boat may not protest another boat for breaking that rule. This changes RRS 60.1(a).

1 RULES

- 1.1 The regatta will be governed by the rules as defined in The Racing Rules of Sailing (RRS).
- 1.2 The sailing instructions (SIs) consist of the 2019 AYC STANDARD DROP MARKS SAILING INSTRUCTIONS (available at <https://annapolisyc.com/racing/raceoffice>) and the Event Sailing Instructions Supplement (called 'the supplement').
- 1.3 If a rule in the supplement has the same number as a rule of the 2019 AYC STANDARD DROP MARKS SAILING INSTRUCTIONS, then the rule in the supplement replaces the rule of the 2019 AYC STANDARD DROP MARKS SAILING INSTRUCTIONS.

2 COMMUNICATIONS WITH COMPETITORS

- 2.1 The race office is located at the western end of the 3rd floor of the AYC Sailing Center, and can be reached by telephone at 410-858-4964 or by email at raceoffice@annapolisyc.org. Forms can be found at the race office or online at <https://annapolisyc.com/racing/raceoffice>.
- 2.2 The official notice board is electronic. A link to the event specific notice board will be included in the supplement.
- 2.3 On the water, the race committee intends to monitor and communicate with competitors via VHF radio. This includes courtesy announcements and confirmation of race committee signals before, during, and after racing. The channel will be included in the supplement.

3 CHANGES TO SAILING INSTRUCTIONS

- 3.1 Any change to the SIs will be posted no later than 2 hours before the first scheduled warning signal on the day it will take effect, except that any change to the schedule of races will be posted by 2000 on the day before it will take effect.

4 SIGNALS MADE ASHORE

- 4.1 Signals made ashore will be displayed from the flag pole on the 2nd deck of the AYC Clubhouse.
- 4.2 When flag AP is displayed ashore, '1 minute' is replaced with 'not less than 60 minutes' in the race signal AP.

5 SCHEDULE OF RACES

- 5.1 The event schedule will be stated in the supplement.
- 5.2 Races not completed on the scheduled day are rescheduled as the first races on the following day. Races not completed the last day of racing will not be sailed.

6 CLASS FLAGS

- 6.1 Class flags will be as follows:

Class	Flag	Class	Flag
Alberg 30	G	J/35	K
Alerion 28	4	J/70	6
Cal 25	T	J/80	J
Etchells	E	ORC I	1
Harbor 20	W	ORC II	2
J/105	V	ORC III	3
J/22	7	Star	9
J/30	D		

- 6.2 Boats in ORC classes shall clearly display two class flags - one at the bow and one at the stern.
- 7 RACING AREA
- 7.1 The racing area will be in the Chesapeake Bay off the mouth of the Severn River as shown in SI Attachment 1.
- 7.2 No later than 120 minutes prior to the first scheduled warning signal, the race committee will post the approximate intended location of the starting area on the notice board.
- 7.3 Approximately 60 minutes prior to the first scheduled warning signal, the race committee will announce the approximate location of the starting area on VHF radio.
- 7.4 Approximately 30 minutes prior to the first scheduled warning signal, the race committee will announce the location of the race committee signal vessel on VHF radio.

8 THE COURSES

- 8.1 The courses are shown in SI Attachment 2.
- 8.2 No later than the warning signal, the race committee signal vessel will display the course to be sailed, the approximate distance between the leeward and windward marks, and the approximate compass bearing of the first leg of the course.
- 8.3 If the race committee signal vessel displays flag C before the warning signal, accompanied by a series of repetitive sounds, the first mark of the course will be a new mark (see SI 12).

9 MARKS

- 9.1 The marks will be described in the supplement.
- 9.2 A race committee starting or finishing vessel may set a stand-off buoy. When present, this stand-off buoy, the line attaching it to the race committee vessel, and the race committee vessel are all part of the starting or finishing mark.

10 THE START

- 10.1 No later than 120 minutes prior to the first scheduled warning signal, the race committee will post the starting order for the first race of the day on the notice board.
- 10.2 The starting line will be between the staff or halyard displaying an orange flag on the race committee signal vessel at the starboard end, and either the course side of the starting mark or the staff or halyard displaying an orange flag on the race committee vessel at the port end.
- 10.3 *[DP]* Boats whose warning signal has not been made shall avoid the starting area during the starting sequence for other classes.
- 10.4 A boat that does not start within 10 minutes after her starting signal will be scored Did Not Start without a hearing. This changes RRS A4 and A5.

11 RECALLS

- 11.1 The race committee will announce on VHF radio boats identified as OCS, UFD, or BFD. A boat may not base a request for redress on the failure to hear or receive the announcement, the timeliness of announcement, or the order in which boats are announced. This changes RRS 62.1(a).

12 CHANGE OF THE NEXT LEG OF THE COURSE

- 12.1 To change the next leg of the course, the race committee will lay a new mark (or move the finishing line) and remove the original mark as soon as practicable. When in a subsequent change, a new mark is replaced, it will be replaced by an original mark.
- 12.2 After a start, if flag C is flown over flag Q, the course change applies only to boats beginning their final leg to the finish. This changes RRS 33 and race signal C.

13 FINISH

- 13.1 The finishing line will be described in the supplement.

14 PENALTY SYSTEM

- 14.1 Penalties while racing: RRS 44.1, One-Turn and Two-Turns Penalties will apply.
- 14.2 Penalties after racing: RRS/US Appendix V2, Penalty Taken After the Race, will apply.

15 TIME LIMITS

- 15.1 The Mark 1 Time Limit, Race Time Limit, and Finishing Window will be stated in the supplement.
- 15.2 If no boat has passed the first mark within the Mark 1 Time Limit, the race will be abandoned.
- 15.3 The Race Time Limit is the time limit for the first boat in each class to sail the course and finish. If no boat finishes within the Race Time Limit, the race will be abandoned.
- 15.4 The Finishing Window is the time for boats to finish after the first boat sails the course and finishes. Boats failing to finish within the Finishing Window, and not subsequently retiring, penalized or given redress, will be scored Time Limit Expired (TLE) without a hearing. This changes RRS 35, A4, A5 and A11.

16 PROTESTS, REQUESTS FOR REDRESS, SCORING INQUIRIES

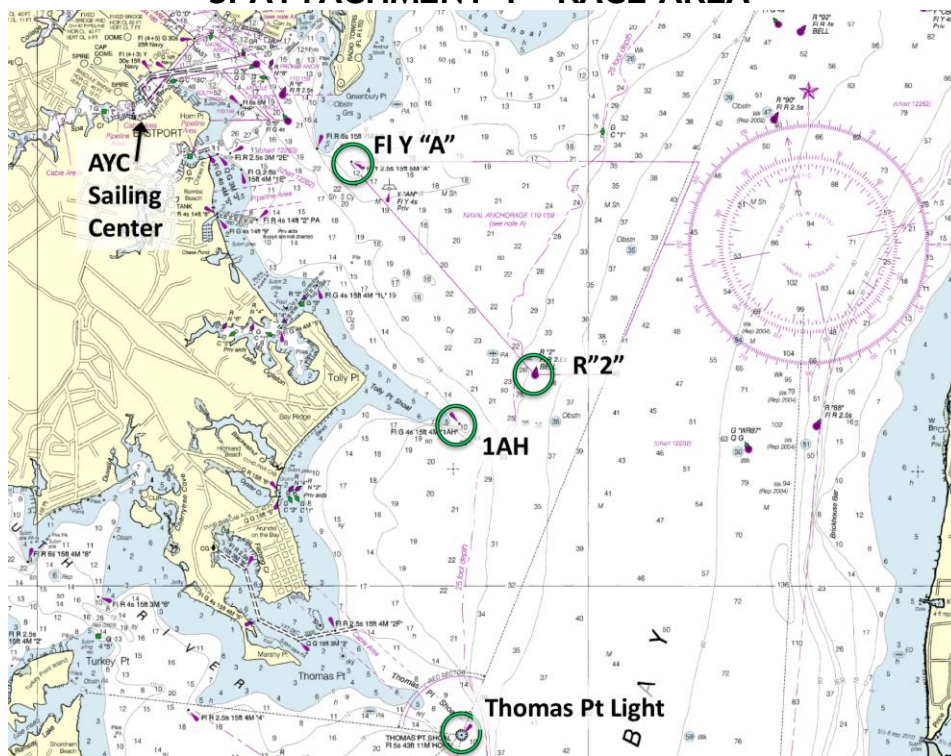
- 16.1 Protest forms, scoring inquiry forms, and penalty acceptance forms shall be delivered to the race office (see SI 2).
- 16.2 Protests, requests for redress or reopening shall be delivered to the race office by the protest time limit.
- 16.3 When the race committee receives a scoring inquiry form, it will review its records and respond as soon as practicable.
- 16.4 The protest time limit is 60 minutes after the race committee signal vessel docks. The race committee will post the protest time limit.
- 16.5 The race committee will post a list of race committee scoring actions no later than the protest time limit.
- 16.6 Notices of protests by the race committee or protest committee will be posted to inform boats under RRS 61.1(b).
- 16.7 As soon as practicable after the protest time limit, the protest committee will post a notice to inform competitors of the schedule and location of hearings in which they are parties or named as witnesses.

17 SCORING

- 17.1 RRS Appendix A4, Low Point System, will apply.
- 17.2 One race is required to be completed to constitute a series.

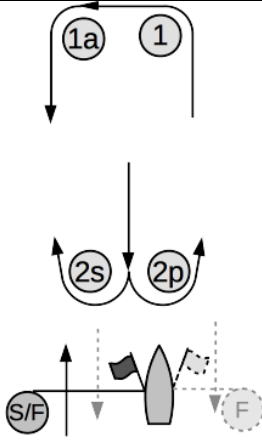
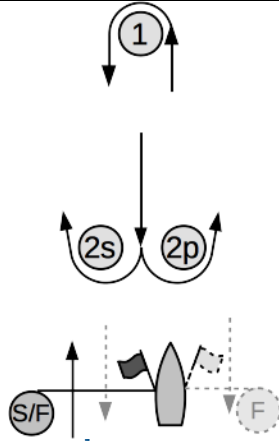
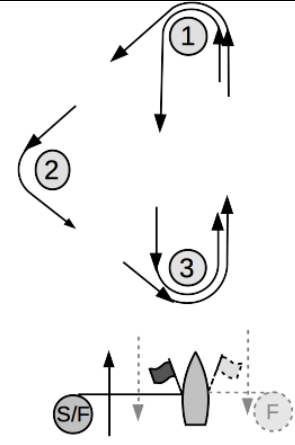
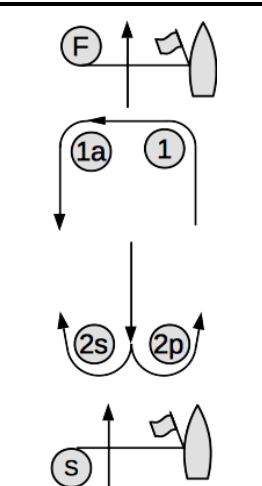
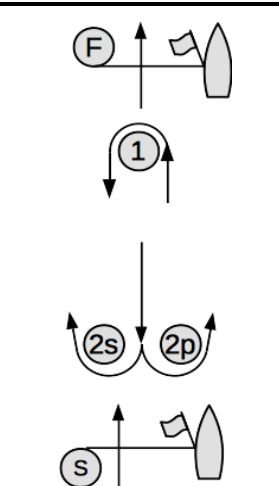
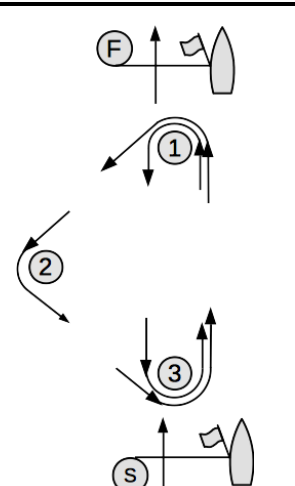
- 17.3 A boat's series score will be the total of her race scores.
- 17.4 Boats to be scored TLE will be scored points equal to the number of boats finishing within the Finishing Window plus two points by the race committee without a hearing but no worse than the number of entries. This changes RRS A4.2 and A5.
- 18 SAFETY**
- 18.1 [DP] A boat that retires from a race, or leaves the racing area between races, shall notify the race committee or the race office at the first reasonable opportunity.
- 18.2 [NP] [DP] A boat shall not exercise right of way, cross in proximity to, or interfere with reasonable transit of the race area by commercial ships, tugs, or barges. Boats must take evasive action well in advance of a potentially dangerous situation. The US Coast Guard, ship captains, and bay pilots have been encouraged to report any incident they observe.
- 18.3 A boat without way may use any means of propulsion to avoid commercial traffic that is under way provided: (a) the boat does not gain an advantage; (b) use of the propulsion is the boat's only means of avoiding the commercial traffic; and (c) the boat submits a report to the race office by the protest time limit describing the incident and the boat's actions.
- 18.4 The race committee or protest committee may protest a boat for SI 18.2 based on information received from any source. The protest time limit does not apply. A report from the US Coast Guard, a ship captain, or a bay pilot will be accepted as evidence without the author present. This changes RRS 60.2, 60.3, 61.3, and 63.6.
- 19 PRIZES**
- 19.1 Prizes will be given to the top 3 boats in each class.
- 19.2 Additional prizes may be awarded at the discretion of the organizing authority.
- 20 DISCLAIMER OF LIABILITY**
- Competitors participate in the regatta entirely at their own risk. See RRS 4, Decision to Race. The organizing authority will not accept any liability for material damage or personal injury or death sustained in conjunction with or prior to, during, or after the regatta.

SI ATTACHMENT 1 - RACE AREA



SI ATTACHMENT 2 - COURSES

In the below table, the course designation is followed by the mark rounding order for that course. All marks except 2S are to be rounded to port. The starting line is described in SI 10. The marks and finishing line will be described in the supplement. If the race committee displays "NO GATE" near the course designation, then mark 2S will not be set. If there is only one mark at the leeward gate, that mark is 2p.

<div style="font-size: 2em; font-weight: bold; margin-bottom: 10px;">LA</div>  <p style="margin-top: 20px;">LA2: Start-1-1a-2s/2p- 1-1a-Finish</p> <p>LA3: Start-1-1a-2s/2p- 1-1a-2s/2p- 1-1a-Finish</p>	<div style="font-size: 2em; font-weight: bold; margin-bottom: 10px;">L</div>  <p style="margin-top: 20px;">L2: Start-1-2s/2p- 1-Finish</p> <p>L3: Start-1-2s/2p- 1-2s/2p- 1-Finish</p>	<div style="font-size: 2em; font-weight: bold; margin-bottom: 10px;">TL</div>  <p style="margin-top: 20px;">TL2: Start-1-2-3- 1-Finish</p> <p>TL3: Start-1-2-3- 1-3- 1-Finish</p>
<div style="font-size: 2em; font-weight: bold; margin-bottom: 10px;">WA</div>  <p style="margin-top: 20px;">WA2: Start-1-1a-2s/2p- Finish</p> <p>WA3: Start-1-1a-2s/2p- 1-1a-2s/2p- Finish</p> <p>WA4: Start-1-1a-2s/2p- 1-1a-2s/2p- 1-1a-2s/2p- Finish</p>	<div style="font-size: 2em; font-weight: bold; margin-bottom: 10px;">W</div>  <p style="margin-top: 20px;">W2: Start-1-2s/2p- Finish</p> <p>W3: Start-1-2s/2p- 1-2s/2p- Finish</p> <p>W4: Start-1-2s/2p- 1-2s/2p- 1-2s/2p- Finish</p>	<div style="font-size: 2em; font-weight: bold; margin-bottom: 10px;">TW</div>  <p style="margin-top: 20px;">TW2: Start-1-2-3- Finish</p> <p>TW3: Start-1-2-3- 1-3- Finish</p>